



Big Dutchman®



BigFarmNet
technology

BFN FUSION

Vento III

Introducing automation in livestock production
for progressive pig and poultry farmers

Vento III: the well-structured and user-friendly climate and production computer

Vento III is a climate and production computer developed by Big Dutchman that is easy to understand and very user-friendly. The computer is also incredibly simple to install and to put into operation. It features 40 different languages and state-of-the-art technology. Vento III is an entry-level climate and production computer for use in broiler, layer and pig houses. The well-arranged 7-inch touchscreen shows relevant curves as graphs. Functions that are used on a daily basis are

immediately available in the menu, making the computer very easy to handle.

Full integration with BigFarmNet: With BigFarmNet Manager and our cloud solution BFN Fusion, you can easily control the computer on your farm remotely using your mobile phone or PC.

A future-proof investment for your farm!

Mode	Temperature	Ventilation Level
5. Side	21.5 °C	30 %
6. Side	22.0 °C	40 %
7. Side	22.5 °C	50 %
8. Tunnel	23.0 °C	100 %
9. Tunnel	24.0 °C	100 %

Vento III controls the climate based on the temperature and the ventilation level that was previously set for the specific temperatures. The display immediately shows the corresponding ventilation level.

VENTO III: EASY CONTROL OF GLOBALLY SUCCESSFUL

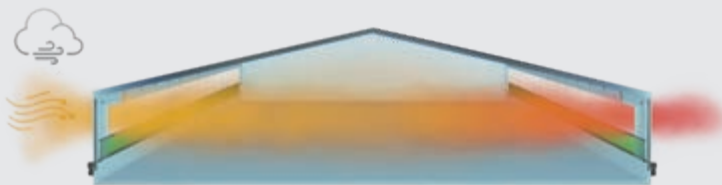
Wall inlet

- ✓ for universal application and optimal fresh air supply
- ✓ available as flange inlet or for incorporation into the wall
- ✓ can be opened either all at once or individually

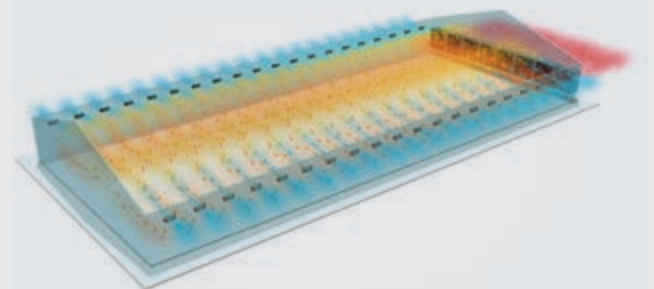


Actuator

- ✓ regulates the flap position of the wall inlets
- ✓ compact design, robust and maintenance-free
- ✓ relay-controlled and available for 24 V DC as well as 230 V AC
- ✓ electric switch for manual operation included



Natural ventilation with curtain control



Negative-pressure ventilation in side mode



Exhaust air chimney

- ✓ high air performance due to aerodynamic optimisations
- ✓ smooth, dirt-repellent surface
- ✓ light and self-supporting roof plate construction renders additional suspension unnecessary
- ✓ included chimney fan saves energy, is easy to install and quiet to operate

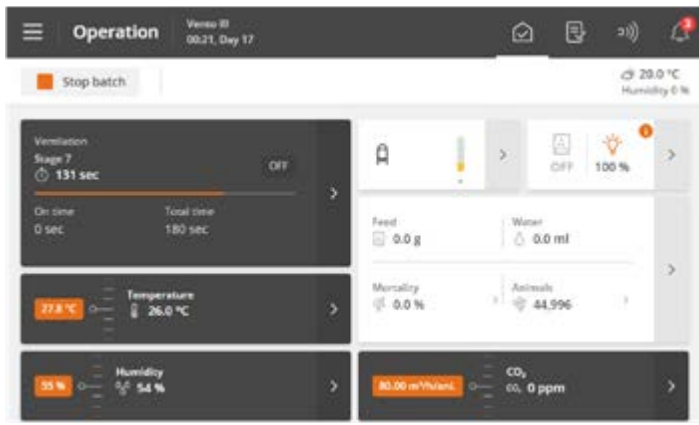


Axial fan with frame

- ✓ for installation into the wall
- ✓ frame made of high-quality cast steel and blades made of die-cast aluminium for a long service life
- ✓ high air performance with low energy consumption
- ✓ easy to control, low noise level
- ✓ available with diameters from 350 mm to 920 mm



Production computer for pig and poultry houses



All relevant information is immediately available in the default menu display

Advantages

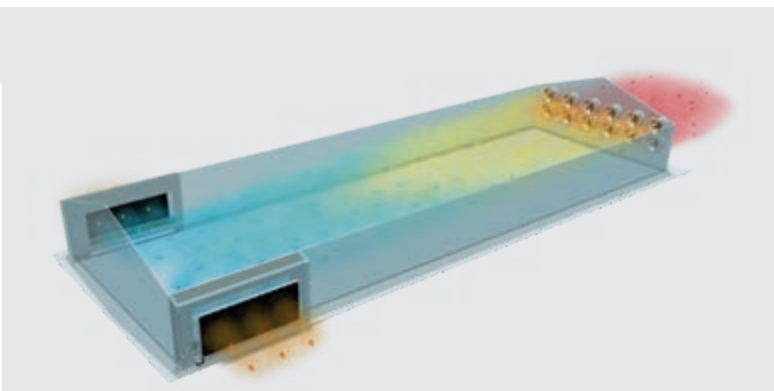
- ✓ Vento III is the ideal climate and production computer to start automation: it helps to improve the house climate and thus increases animal performance;
- ✓ easy to install and to put into operation with little training;
- ✓ control of fresh air and exhaust air as natural ventilation or as side, tunnel or CombiTunnel ventilation;
- ✓ visualisation of the active ventilation level;
- ✓ feed and water recording, light control, weighing;
- ✓ automatic data backups always at midnight.

BIG DUTCHMAN CLIMATE PRODUCTS



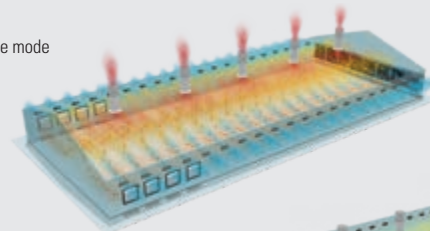
Heater

- ✓ for operation with natural gas or propane
- ✓ temperature-sensitive control
- ✓ built-in fan distributes warm air
- ✓ generated heat is 100 % beneficial to the livestock

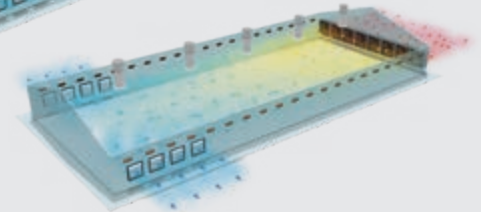


Tunnel ventilation with pad cooling

Side mode



Tunnel mode



CombiTunnel ventilation



AirMaster

- ✓ powerful and pressure-resistant fan with a large diameter
- ✓ with or without cone
- ✓ highly efficient even with low energy consumption
- ✓ air flow pressure opens the shutters, i.e. little air resistance
- ✓ low noise level
- ✓ solid, robust, simple design
- ✓ galvanized or made of plastic

Cooling: RainMaker

- ✓ ideal and very efficient cooling system
- ✓ cellulose or plastic pads
- ✓ water reservoir integrated into frame system, i.e. no additional water tank
- ✓ water supply visible at all times
- ✓ low installation requirements



Vento III: the right computer for all requirements

Vento III is equipped with 12 relays and 13 analogue inputs and outputs per house. If this is not sufficient for the required functions, an optional extension box is

available with an additional 10 relays and 8 analogue inputs and outputs per house.

Note: Relay-controlled actuators always occupy two relays.

Important climate functions / production functions

- ✓ individual switching of two stepless fan groups;
- ✓ cycle ventilation for minimum ventilation rates;
- ✓ automatic calculation of cycle times because minimum ventilation rates are provided in m³ per hour per animal;
- ✓ humidity control with/without heat;
- ✓ control of different heating systems, on/off or stepless for hot-water systems;
- ✓ control of cooling and humidification systems;
- ✓ pressure control according to fresh air, i.e. negative pressure always automatically meets the setpoint;
- ✓ climate curves for automatic adjustment in rearing houses;
- ✓ silo weighing for easy monitoring of silo contents;
- ✓ recording of the water meter's consumption values;
- ✓ water alarm in case of over- or under-supply as compared to the previous day;
- ✓ recording of livestock weights;
- ✓ control of up to six timers for individual tasks;
- ✓ reference curves, e.g. for feed and water consumption;
- ✓ trend curves;
- ✓ alarm messages in case of power failures, deviations from set values such as temperature, humidity, water and feed consumption, and minimum silo content;
- ✓ log file for alarm and operation.

Overview of functions

Fresh air:	4 fresh air inlets
Exhaust air:	2 stepless exhaust air groups 8 on/off exhaust air groups 2 recirculating air groups
Heating:	2 x analogue or relay-controlled
Cooling:	1 x cooling
Emergency opening:	temperature-controlled emergency opening 378 T emergency air relay
Sensors:	4 inside temperature sensors 1 outside temperature sensor 1 inside humidity sensor 1 outside humidity sensor 1 pressure sensor 1 CO ₂ sensor
Timers:	up to 6 timers
Water:	1 water meter 2 x water flushing
Feed:	2 x silo weighing
Light:	up to 3 light groups
Weighing:	up to 2 scales



Temperature-controlled emergency opening 378 T

Temperature-controlled emergency opening 378 T

The optional temperature-controlled emergency opening system 378 T helps to ensure survival of the livestock in case of power failures or technical breakdowns. The system comprises a 24 V DC power supply unit with built-in maintenance-free battery and charger and a separate temperature probe.

The temperature at which the emergency opening function is to be activated can be adjusted at the 378 T. This means that in the case of an emergency, the air inlets and outlets will be controlled based on the temperature. The emergency function itself is part of Vento III.

Uninterruptible power supply (UPS)

We recommend using an uninterruptible power supply in regions where power failures may occur with some regularity. The optional UPS guarantees that power is supplied to Vento III even in case of a blackout so that no data are lost.

Where a 378 or 378 T emergency opening is installed, its battery can be used in combination with the mini UPS board. If no emergency opening system is available, a separate box with battery is used instead.



Big Dutchman.

Europe, Middle East & Africa:
Big Dutchman International GmbH
 P.O. Box 1163 · 49360 Vechta, Germany
 Phone +49(0)4447 801-0 · Fax -237
 big@bigdutchman.de
 www.bigdutchman.de

USA: Big Dutchman, Inc.
 Phone +1 616 392 5981 · bigd@bigdutchmanusa.com
 www.bigdutchmanusa.com

Brazil: Big Dutchman (Brasil) Ltda.
 Phone +55 16 2108 5310 · bdb@bigdutchman.com.br
 www.bigdutchman.com.br

Russia: 000 "Big Dutchman"
 Phone +7 495 2295 161 · big@bigdutchman.ru · www.bigdutchman.ru

Asia/Pacific: BD Agriculture (Malaysia) Sdn. Bhd.
 Phone +60 3 334 83 555 · bdasia@bigdutchman.com · www.bigdutchman.com

China: Big Dutchman (Tianjin) Livestock Equipment Co., Ltd.
 Phone +86 10 5632 0188 · bdcnsales@bigdutchman.com
 www.bigdutchmanchina.com